

The Problem



Defective Medical Equipment reaching the OR: Unknown danger to Patient Safety

Minimally Invasive Surgeries (MIS) depend heavily on dedicated medical instruments and devices to successfully perform procedures. During the Instrument Reprocessing Cycle, brief and subjective visual inspections are performed by CSSD employees before returning the instruments to the OR.

Without objective quality inspections at the CSSD, defective medical equipment such as Light Guide Cables, Endoscopes and Diathermy instruments are able to reach the OR every day, endangering Patient Safety more often than is acceptable¹⁻³.

References/Bibliography

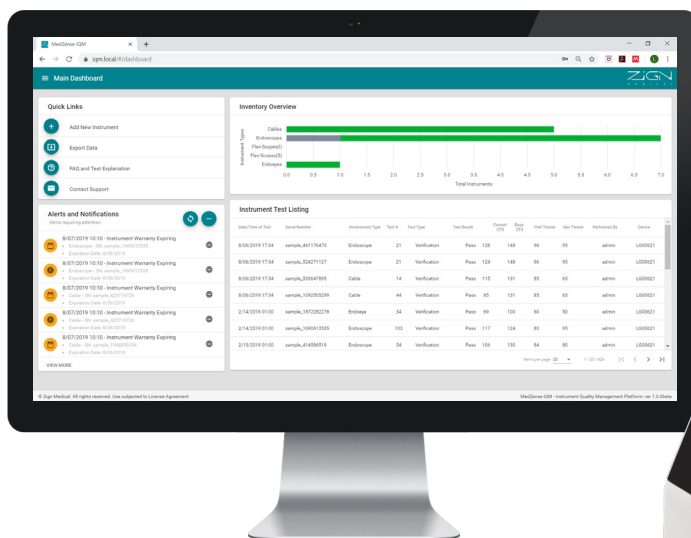
- ¹ S. Courdier, O. Garbin. Equipment Failure: Causes and Consequences in Endoscopic Gynecologic Surgery. January 2009.
- ² H. Yasuhara, K. Fukatsu. Prevention of medical accidents caused by defective surgical instruments. February 2012.
- ³ J. J. Jung, A. Kashfi. Characterization of device-related interruptions in minimally invasive surgery: need for intraoperative data and effective mitigation strategies. March 2019.

The Solution

Managing Instrument Inventory & Test Results with MedZense IQM Platform

Objective quality inspections of MIS equipment are required and must be documented to prevent defective instruments reaching the OR. MedZense IQM Platform allows you to measure, store and analyze measurement data, ensuring defective instruments are removed from service before they negatively impact surgical performances.

Regular and objective testing of your instrument inventory is necessary to minimize patient risk and limit the surgeon's responsibility for defective instruments. Collecting and analyzing the test data with MedZense IQM creates insights in your hospital's instrument quality, records the measurements performed for future references and prevents defective equipment reaching the OR.

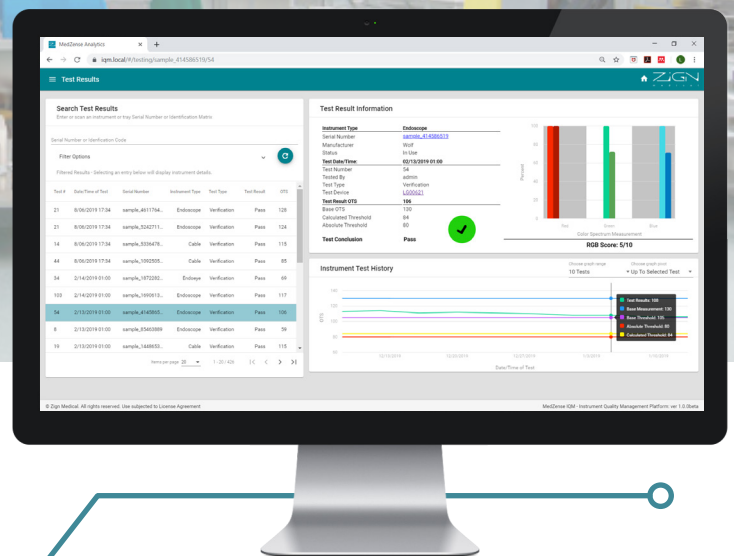


Instrument Quality Management Software MedZense IQM Platform



The Benefits

- + Documented objective instrument quality inspections.
- + Minimizes the amount of defective instruments reaching the OR.
- + Determine acceptance and rejection criteria on instrument level.
- + Create detailed reports on instrument quality for new, damaged and repaired instruments.
- + Provide insights in current instrument inventory and overall instrument quality.
- + Analyse and compare your test results with others (optional).
- + Decrease frustration and delays in the OR.



MedZense IQM Software Features:

- » Instrument Inventory Management
- » Test Results Database
- » Comprehensive Interface for Test Devices
- » Data Export
- » Acceptance & Rejection Criteria Management

The System

The MedZense IQM Platform consists of:
MedZense IQM Software, including the Web App & Test Client
Connects to up to two testing devices
More devices can be connected upon request

Devices integrated in the MedZense IQM Platform:
MedZense LG20-e
Datamatrix Scanner

Device integration coming soon:
Diateq Professional

